



ArcelorMittal

# HOW TO REACH US

## ArcelorMittal Montreal inc.

### CONTRECŒUR COMPLEXES

- 1 Administrative Offices**  
4000, route des Acières  
Contrecœur (Québec) J0L 1C0  
Tél.: 450 587-8600
- 2 ArcelorMittal Contrecœur-East**  
3900, route des Acières  
Contrecœur (Québec) J0L 1C0  
Tél.: 450 392-3200
- 3 ArcelorMittal Contrecœur-West**  
2050, route des Acières  
Contrecœur (Québec) J0L 1C0  
Tél.: 450 587-2012

### WIRE DRAWING PLANTS

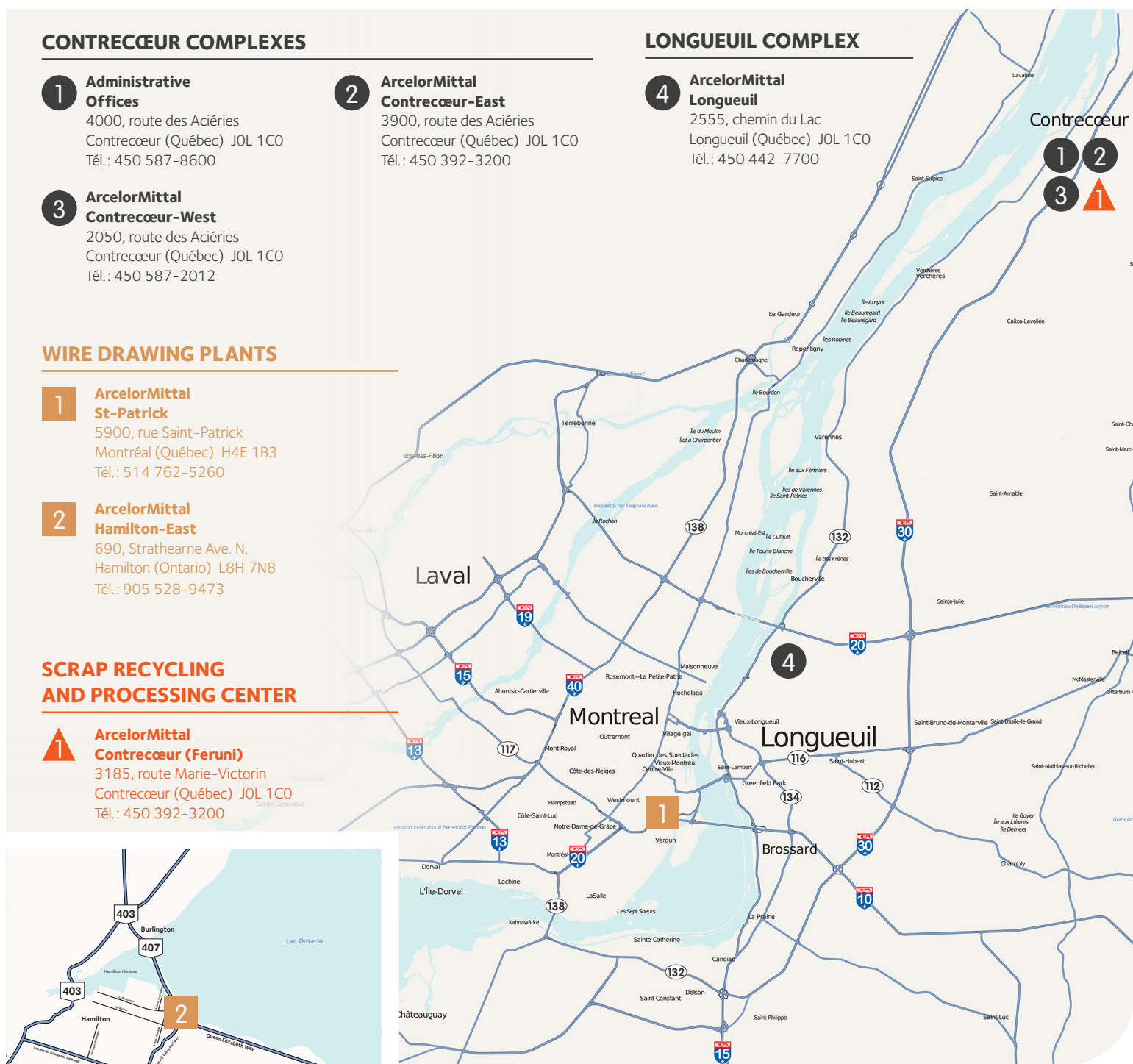
- 1 ArcelorMittal St-Patrick**  
5900, rue Saint-Patrick  
Montréal (Québec) H4E 1B3  
Tél.: 514 762-5260
- 2 ArcelorMittal Hamilton-East**  
690, Strathearn Ave. N.  
Hamilton (Ontario) L8H 7N8  
Tél.: 905 528-9473

### SCRAP RECYCLING AND PROCESSING CENTER

- 1 ArcelorMittal Contrecœur (Feruni)**  
3185, route Marie-Victorin  
Contrecœur (Québec) J0L 1C0  
Tél.: 450 392-3200

### LONGUEUIL COMPLEX

- 4 ArcelorMittal Longueuil**  
2555, chemin du Lac  
Longueuil (Québec) J0L 1C0  
Tél.: 450 442-7700



## To get to **Administrative Offices, Contrecœur-East, Scrap Recycling and Processing Center, Reduction Plant and Contrecœur-West**

### From airport, head towards the South Shore

Take highway **20** and follow indications for Champlain bridge to the South Shore.

### From downtown Montreal, head towards the South Shore (Via Champlain bridge).

**On the South Shore**, continue along highway **10** to highway **30 East** (towards Sorel-Tracy).

Take highway **30** and get off at **exit 117 (St-Antoine-sur-Richelieu, Montée de la Pomme-d'Or)**.

Turn left and take the overpass over highway **30**.

### From downtown Montreal, head towards the South Shore (Via Jacques-Cartier bridge).

On the South Shore, take highway **132 East** (towards Sorel-Tracy) to highway **20**.

Take highway **20 East** (towards **Quebec City**). Seven kilometres after the Lafontaine Tunnel, take **exit 98** (towards Sorel-Tracy) to highway **30 East**.

Get off highway **30** at **exit 117 (St-Antoine-sur-Richelieu, Montée de la Pomme-d'Or)**.

Turn left and take the overpass over highway **30**.

### For the Contrecœur-East complex:

Immediately after the overpass, turn left at the traffic light and head towards the entrance of the Contrecœur-East complex, straight ahead.

### For the Contrecœur-West complex:

Immediately after the overpass, turn left at the traffic light. Take the curve to the left on the route des Aciéries, past the credit union building. Drive for about 2 kilometres to the stop sign. The Contrecœur-West complex is on your right.

### For the Reduction plant:

Immediately after the overpass, go straight at the traffic light. The reduction plant is on your left after the railroad.

### For the Scrap Recycling and Processing Center (Contrecœur-Feruni) :

Immediately after the overpass, go straight at the traffic light. Drive to the end of Montée de la Pomme-d'Or, and turn left on route Marie-Victorin. Drive under the orange ArcelorMittal pipe and continue for about 1 kilometre. The center is on your left at street number 3185 (an ArcelorMittal display indicates the entrance).



## To get to **Longueuil**

### From airport, head towards the South Shore

Take highway **20** and follow indications for Champlain bridge to the South Shore.

### From downtown Montreal, head towards the South Shore (Via Champlain bridge or Jacques-Cartier bridge).

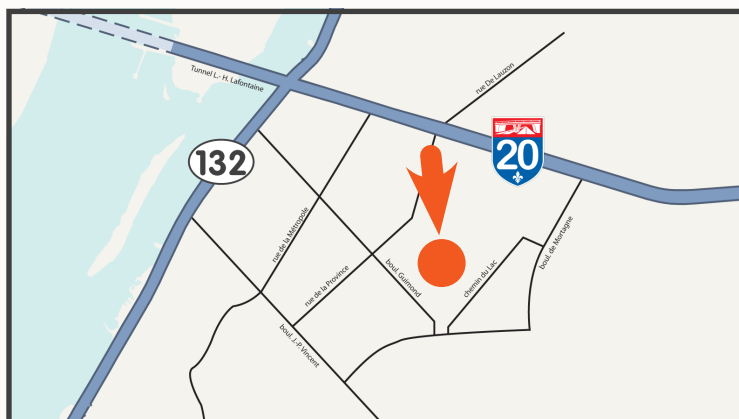
**On the South Shore**, take highway **132 East** to highway **20 East** (towards Quebec City).

Get off highway **20** at **exit 92 (de Mortagne)**. 2 kilometre after the Lafontaine tunnel.

Turn right on **de Mortagne blvd**.

At the second stop sign, turn right onto **chemin du Lac**.

Take **chemin du Lac** for about 1 kilometre to the entrance to the Longueuil Works.



## To get to **Wire Drawing Plants,** **St-Patrick and Hamilton**

### St-Patrick

**From airport, take highway 20 (720), heading east:**

Get off at **exit 64, Angrignon blvd.** Take Angrignon to **Cordner Street** (after second traffic light) and turn right. Right again onto **Senkus Street** and right once more at **St. Patrick Street**. The Montreal Wire Drawing Plant is another 2.6 km down St. Patrick Street (1<sup>st</sup> traffic light).

**From downtown Montreal via highway 20 (720) going West:**

**Notre Dame exit.** Take the overpass. Turn left onto **Angrignon blvd.** Take Angrignon to **Cordner Street** (after second traffic light) and turn right. Right again onto **Senkus Street** and right once more at **St. Patrick Street**. The Montreal Wire Drawing Plant is another 2.6 km down **St. Patrick Street** (1<sup>st</sup> traffic light).

**From highway 10:**

Take the **Champlain bridge** and follow the signs to highway **15 North**. Take **exit 61 (Atwater)**. Turn right onto **Centre Street** (before the tunnel), left at **Argenson** and left again onto **St. Patrick Street**. Continue along **St. Patrick** till you come to the Montreal Wire Drawing Plant.

**From highway 40:**

Take **15 south (Decarie)**. Follow the signs for the **Champlain bridge**. Get off at **exit 62 (Verdun, La Vérendrye)** and turn right immediately onto **De l'Église Street**. Turn left on **St. Patrick Street**. The Montreal Wire Drawing Plant is another 1.2 km down **St. Patrick** (2<sup>nd</sup> traffic light).

### Hamilton

**From Toronto Pearson Airport:**

Follow directions to highway **427 South** for approximately 15 km. Then, follow signs to **Queen Elizabeth Way (QEW) – direction Hamilton / Niagara / Fort Erie**. Drive for 50 kilometres and get off at **exit 90 (Burlington Street / Woodward Avenue)**. Keep left at the fork, following signs to **Burlington Street**. Drive 2 km on **Burlington Street**, and then turn right on **Strathearne Avenue** until you reach the plant entrance.

**From downtown Toronto:**

Reach out for **Queen Elizabeth Way (QEW) – direction Hamilton / Niagara / Fort Erie** from the **Gardiner Express Way West** or from highway **427 South**. Drive for 50 kilometres and get off at **exit 90 (Burlington Street / Woodward Avenue)**. Keep left at the fork, following signs to **Burlington Street**. Drive 2 km on **Burlington Street**, and then turn right on **Strathearne Avenue** until you reach the plant entrance.

**From the South (Niagara Region):**

Reach out for **Queen Elizabeth Way (QEW)**. Drive west and get off at **exit 90 (Burlington street)**. Take the ramp for **Parkdale Avenue / Strathearne Avenue**. Continue on **Burlington Street**, and turn right on **Strathearne Avenue** until you reach the plant entrance.

## ST-PATRICK



## HAMILTON

